

A23_90175 (A2H028Q01) WATER QUALITY

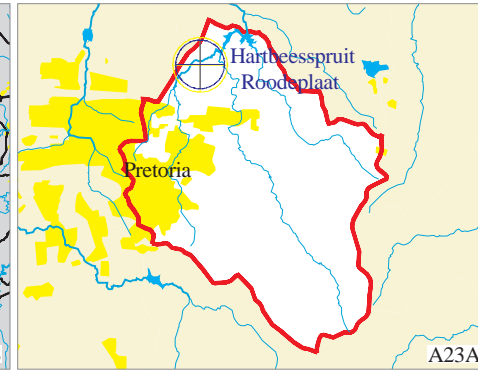
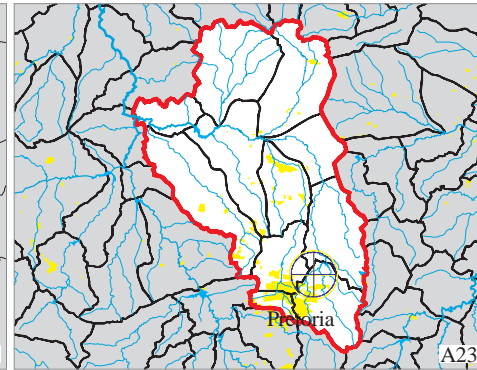
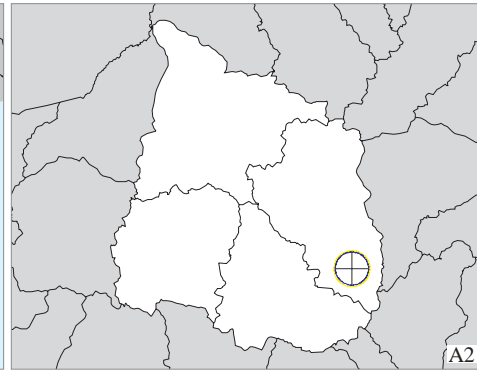
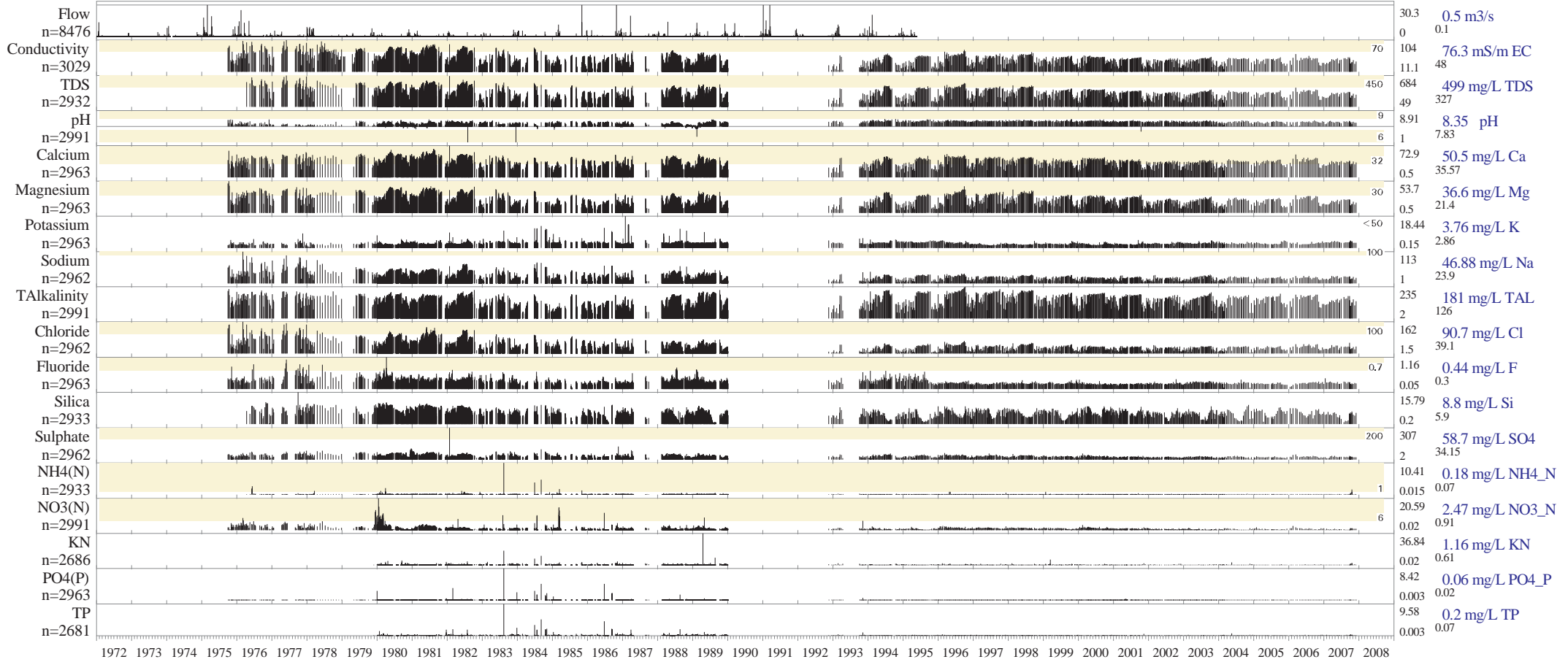
At Kameeldrift on Hartbeesspruit: Guideline for domestic human consumption

1972-01-01 to 2008-12-31

25°39'03"S 28°19'10"E

Maucha median ion balance diagram (left) and time series graphs (below) of available flow and water quality data. The y axes show summary statistics. Source data are from the WMS: INFO /hri/db/wmrq/wmdata/wq/inorganic.dat, /hri/db/cover/s-africa/nms_wms and Hydsys: /hri/db/iwqs/db/flow/

Each y-axis shows:
maximum
90th Percentile
median
minimum
guideline value



Metadata:
90175 nr 1 of select > 1 samples
Resource Quality Services directorate
Department of Water Affairs & Forestry
Private Bag 3313 PRETORIA,
tel 012 808 9605, fax 012 808 2702
E-mail: SilberbauerM@dwa.gov.za
Run 2009-03-25 - 14:44:18 (by Michael)
Text in
/hri/db/barcode/2009/bcmichael/20090325144241.txt
Maucha diagram explanation:
http://www.dwaf.gov.za/twqs/gis_apps/maucha.pdf
Software:
/p22/spk/prjw8/users/michael/aml/barcode.aml v8.03