

A23_90175 (A2H028Q01) WATER QUALITY

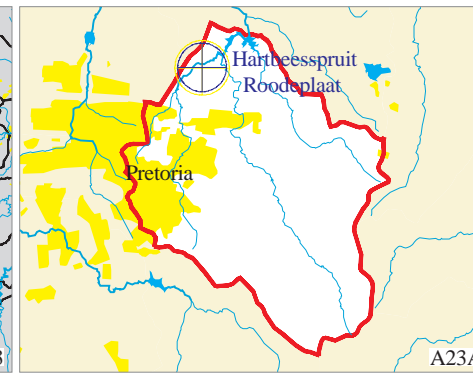
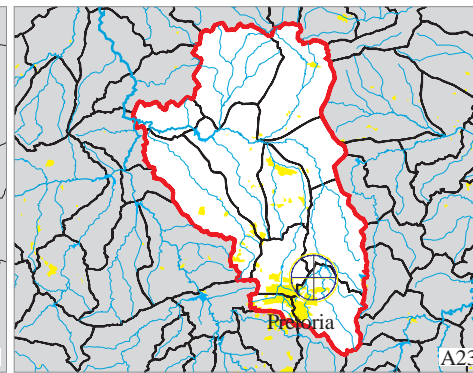
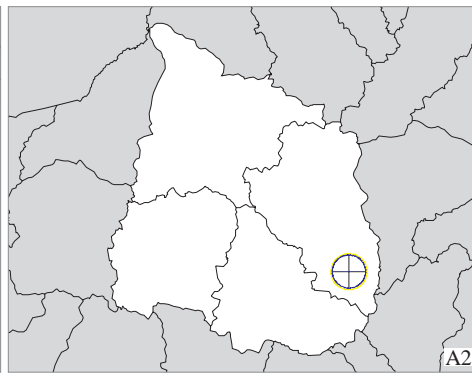
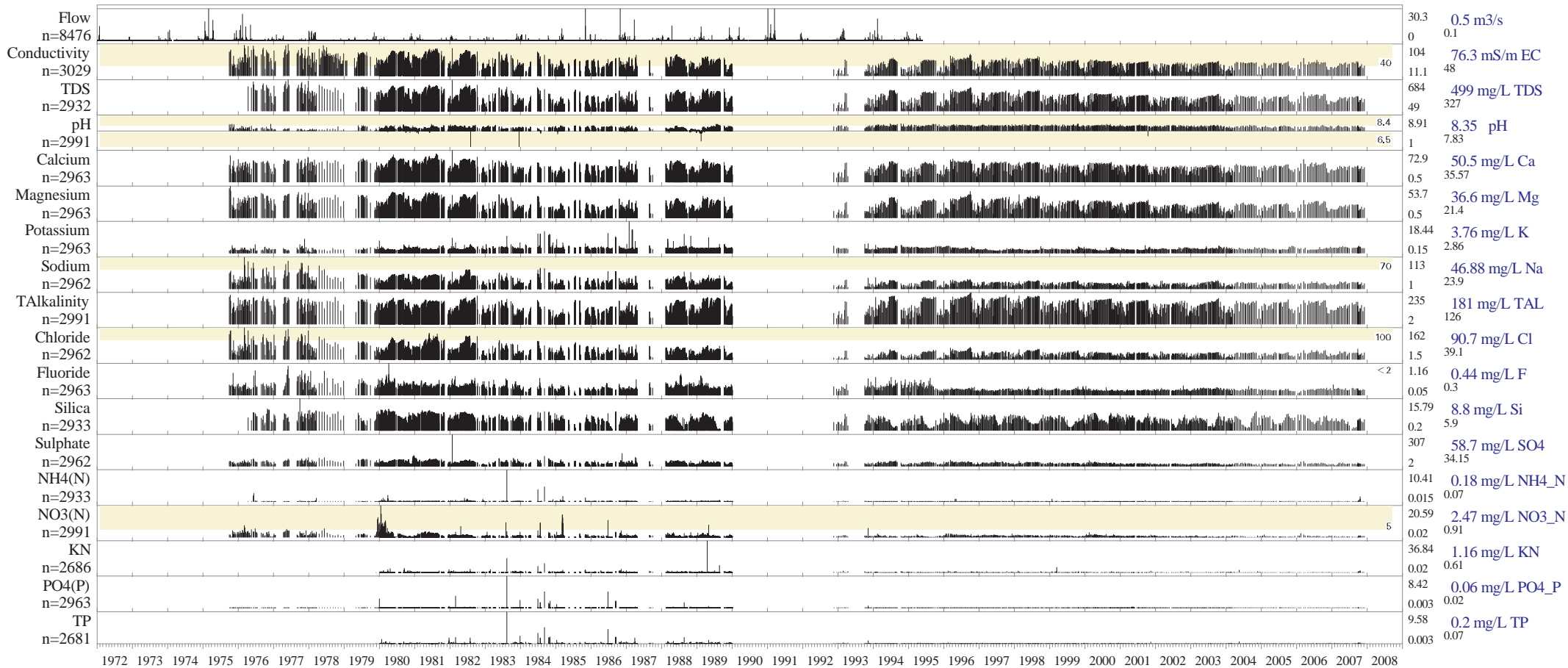
At Kameeldrift on Hartbeesspruit: Guideline for agriculture irrigation

1972-01-01 to 2008-12-31

25°39'03"S 28°19'10"E

Maucha median ion balance diagram (left) and time series graphs (below) of available flow and water quality data. The y axes show summary statistics. Source data are from the WMS: INFO /hri/db/wmrq/wmdata/wq/inorganic.dat, /hri/db/cover/s-africa/nms_wms and Hydsys: /hri/db/iwqs/db/flow/

Each y-axis shows:
 maximum
 90th Percentile
 median
 minimum



Metadata:
 90175 nr 1 of select > 1 samples
 Resource Quality Services directorate
 Department of Water Affairs & Forestry
 Private Bag 3313 PRETORIA
 tel 012 808 9605, fax 012 808 2702
 Email: SilberbauerM@dwa.gov.za
 Run 2009-03-25 - 14:47:47 (by Michael)
 Text in
 /hri/db/barcode/2009/bcmichael/20090325144610.txt
 Maucha diagram explanation:
 http://www.dwaf.gov.za/iwqs/gis_apps/maucha.pdf
 Software:
 /p22/spk/prjw8/users/michael/aml/barcode.aml v8.03