

# A23\_90175 (A2H028Q01) WATER QUALITY

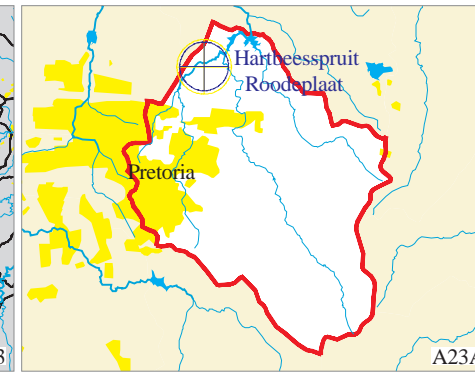
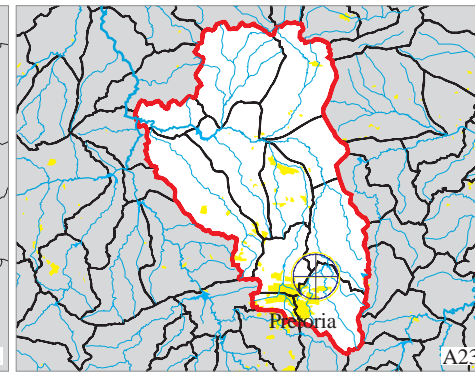
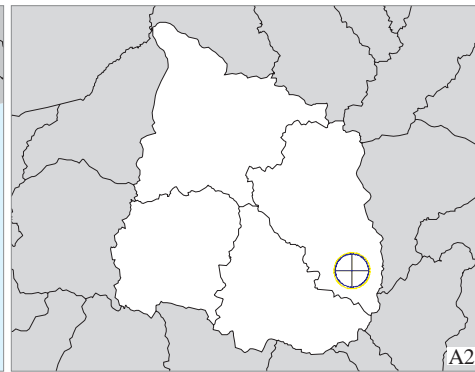
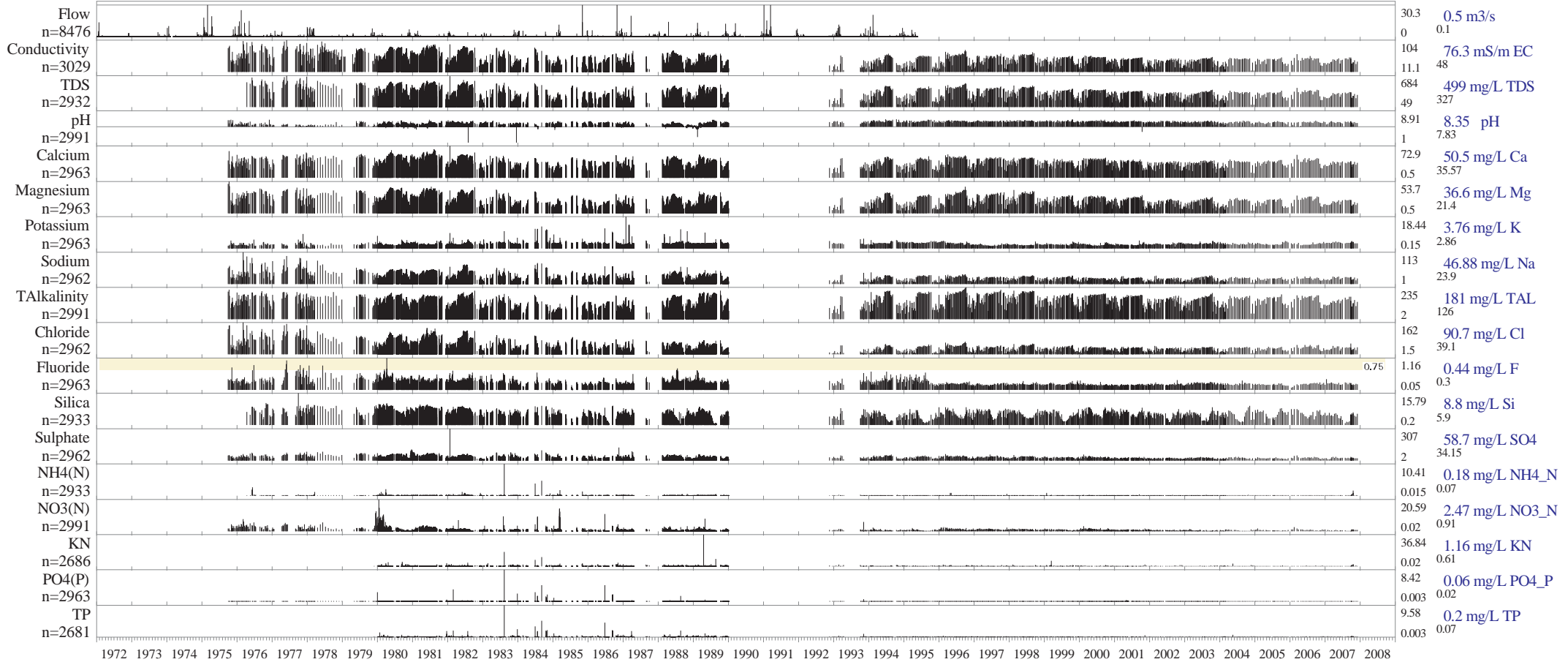
At Kameeldrift on Hartbeesspruit: Guideline for aquatic ecosystems

1972-01-01 to 2008-12-31

25°39'03"S 28°19'10"E

Maucha median ion balance diagram (left) and time series graphs (below) of available flow and water quality data. The y axes show summary statistics. Source data are from the WMS: INFO /hri/db/wmrq/wmdata/wq/inorganic.dat, /hri/db/cover/s-africa/nms\_wms and Hydsys: /hri/db/iwqs/db/flow/

Each y-axis shows:  
maximum  
90th Percentile  
median  
minimum  
guideline value



Metadata:  
90175 nr 1 of select > 1 samples  
Resource Quality Services directorate  
Department of Water Affairs & Forestry  
Private Bag 3313 PRETORIA,  
tel 012 808 9605, fax 012 808 2702  
E-mail: SilberbauerM@dwa.gov.za  
Run 2009-03-25 - 15:02:16 (by Michael)

Text in  
/hri/db/barcode/2009/bcmichael/20090325150027.txt  
Maucha diagram explanation:  
[http://www.dwaf.gov.za/iwqs/gis\\_apps/maucha.pdf](http://www.dwaf.gov.za/iwqs/gis_apps/maucha.pdf)  
Software:  
/p22/spk/prjw8/users/michael/aml/barcode.aml v8.03